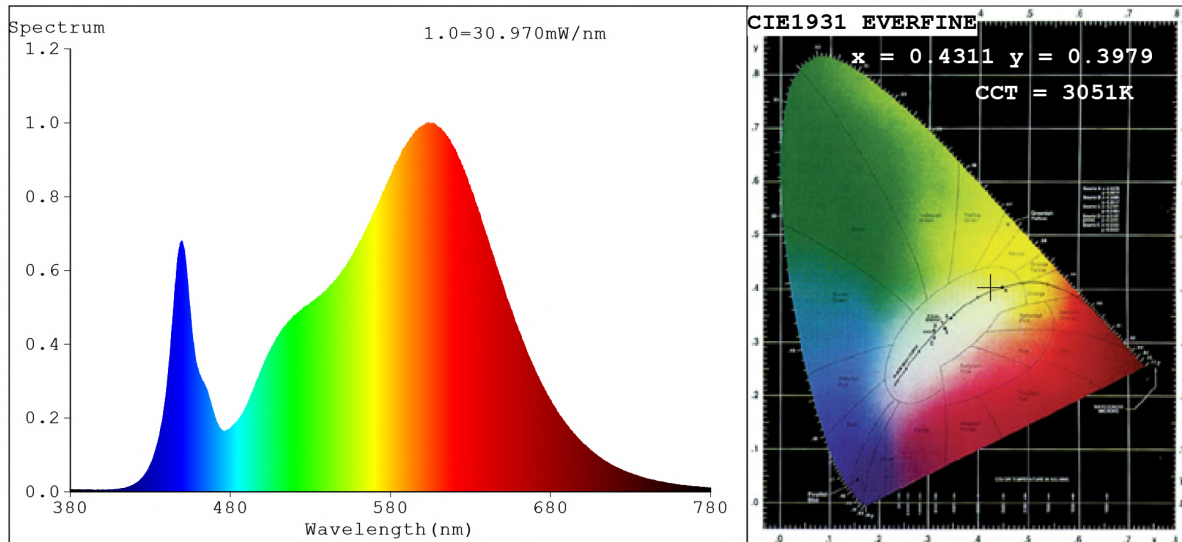


## Spectrum Test Report



### Color Parameters:

Chromaticity Coordinate:  $x=0.4311$   $y=0.3979$  /  $u'=0.2494$   $v'=0.5181$   
CCT=3051K (Duv=-0.0017) Dominant WL:  $\lambda_d = 583.2\text{nm}$  Purity=48.8%  
Ratio: R=22.9% G=74.5% B=2.6%; Peak WL:  $\lambda_p = 603.6\text{nm}$  FWHM=128.7nm  
Render Index:  $R_a=83.5$  CRI=78.3 TM30:  $R_f=82$   $R_g=97$   
R1 =82 R2 =91 R3 =96 R4 =82 R5 =83 R6 =90 R7 =83  
R8 =60 R9 =9 R10=81 R11=83 R12=73 R13=85 R14=99 R15=75

### Photo Parameters:

Flux = 1505 lm Eff. : 149.44 lm/W  $\Phi_e = 4.554\text{ W}$  Scotopic: 2069.2 S/P: 1.3747

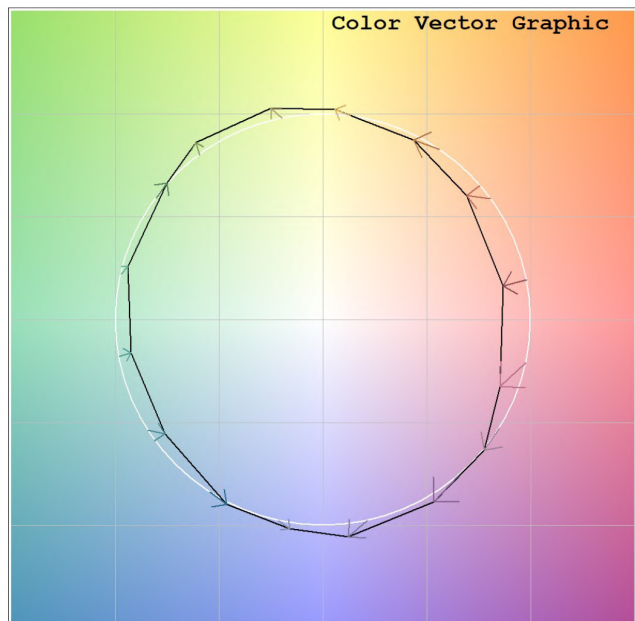
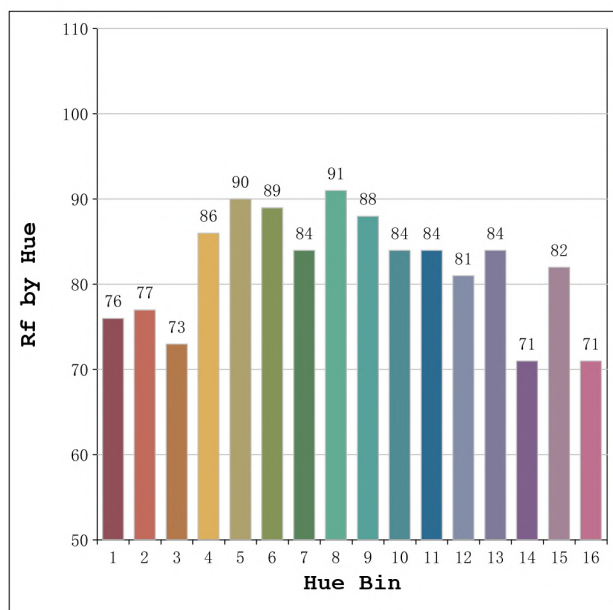
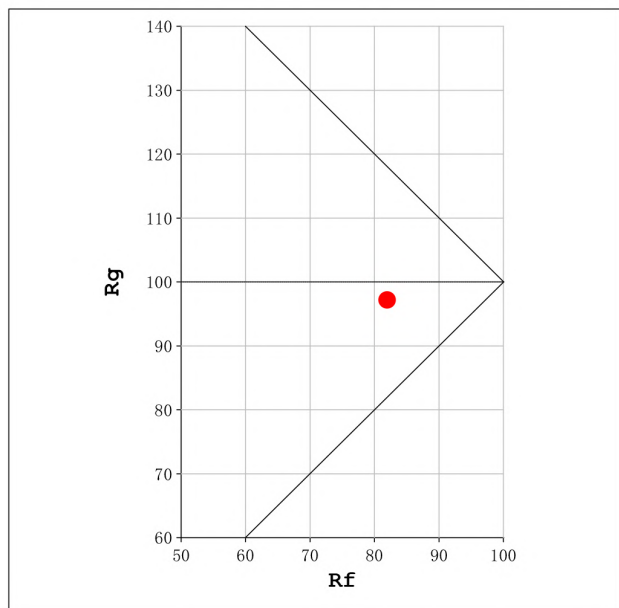
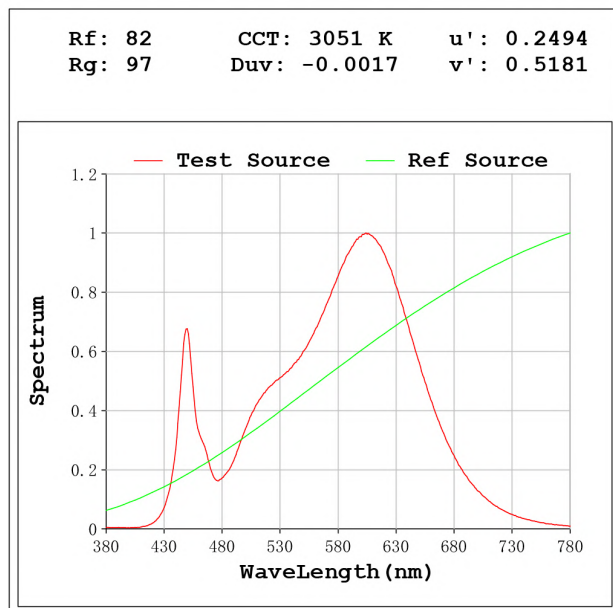
### Electrical parameters:

V = 23.998 V I = 0.4197 A P = 10.07 W PF = 1.000

Status: Integral T = 823 ms  $I_p = 51654$  (79%)

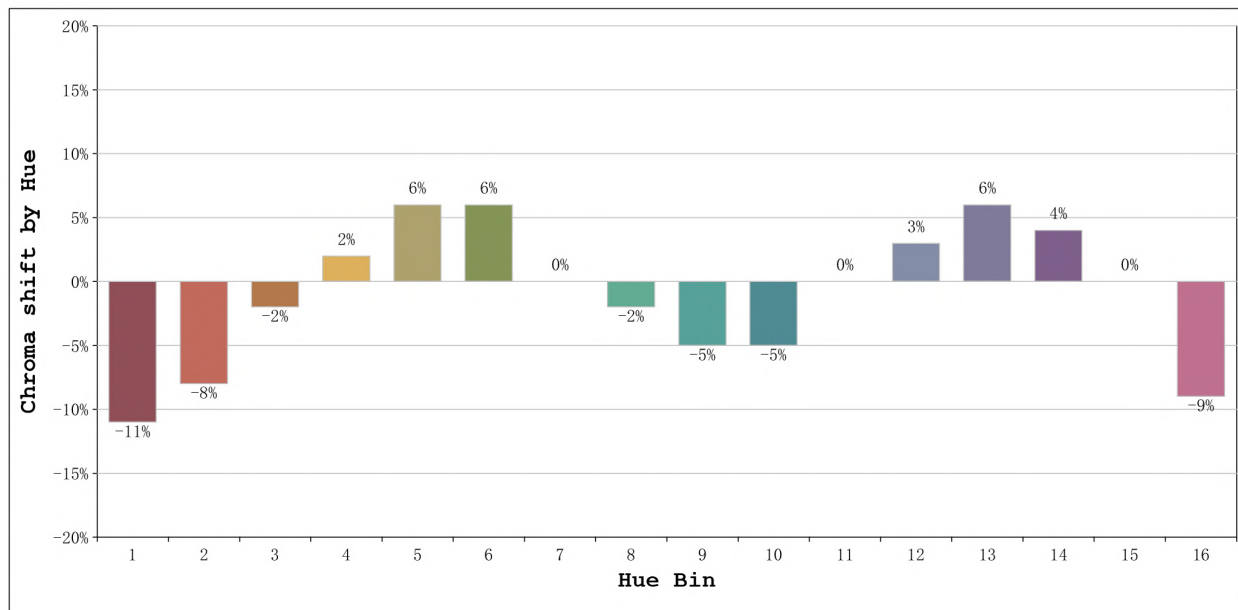
Model: Ecoled Élite 10 3000K  
Tester: Sergio Carneros  
Temperature: 24Deg  
Manufacturer: Luz Negra S.L

Number: 31.010  
Date: 2024-02-28 13:30:58  
Humidity: 40%  
Remarks: 100cm de tira flexible



Model:Ecoled Élite 10 3000K  
 Tester:Sergio Carneros  
 Temperature:24Deg  
 Manufacturer:Luz Negra S.L

Number: 31.010  
 Date:2024-02-28 13:30:58  
 Humidity:40%  
 Remarks:100cm de tira flexible



			Graphic shift(%)	
Hue Bin	Hue Angle	Rf	Chroma	Hue
1	0.0° - 22.5°	76	-11	0
2	22.5° - 45.0°	77	-8	8
3	45.0° - 67.5°	73	-2	13
4	67.5° - 90.0°	86	2	8
5	90.0° - 112.5°	90	6	5
6	112.5° - 135.0°	89	6	-1
7	135.0° - 157.5°	84	0	-8
8	157.5° - 180.0°	91	-2	-3
9	180.0° - 202.5°	88	-5	0
10	202.5° - 225.0°	84	-5	6
11	225.0° - 247.5°	84	0	10
12	247.5° - 270.0°	81	3	6
13	270.0° - 292.5°	84	6	-9
14	292.5° - 315.0°	71	4	-16
15	315.0° - 337.5°	82	0	-12
16	337.5° - 360.0°	71	-9	-13

Model:Ecoled Élite 10 3000K  
 Tester:Sergio Carneros  
 Temperature:24Deg  
 Manufacturer:Luz Negra S.L

Number: 31.010  
 Date:2024-02-28 13:30:58  
 Humidity:40%  
 Remarks:100cm de tira flexible